

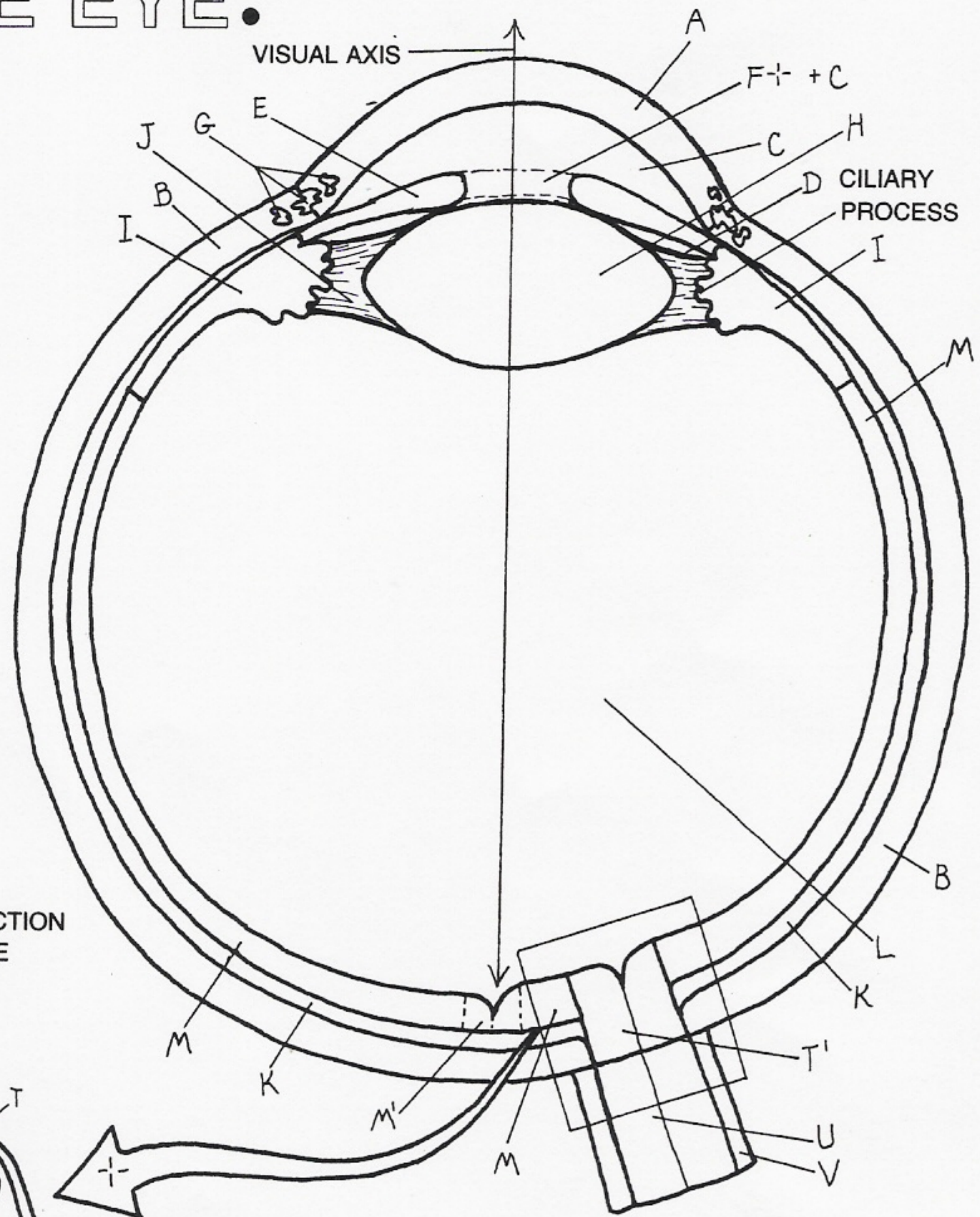
VISUAL SYSTEM: THE EYE

EYEBALL★
CORNEA_A
SCLERA_B

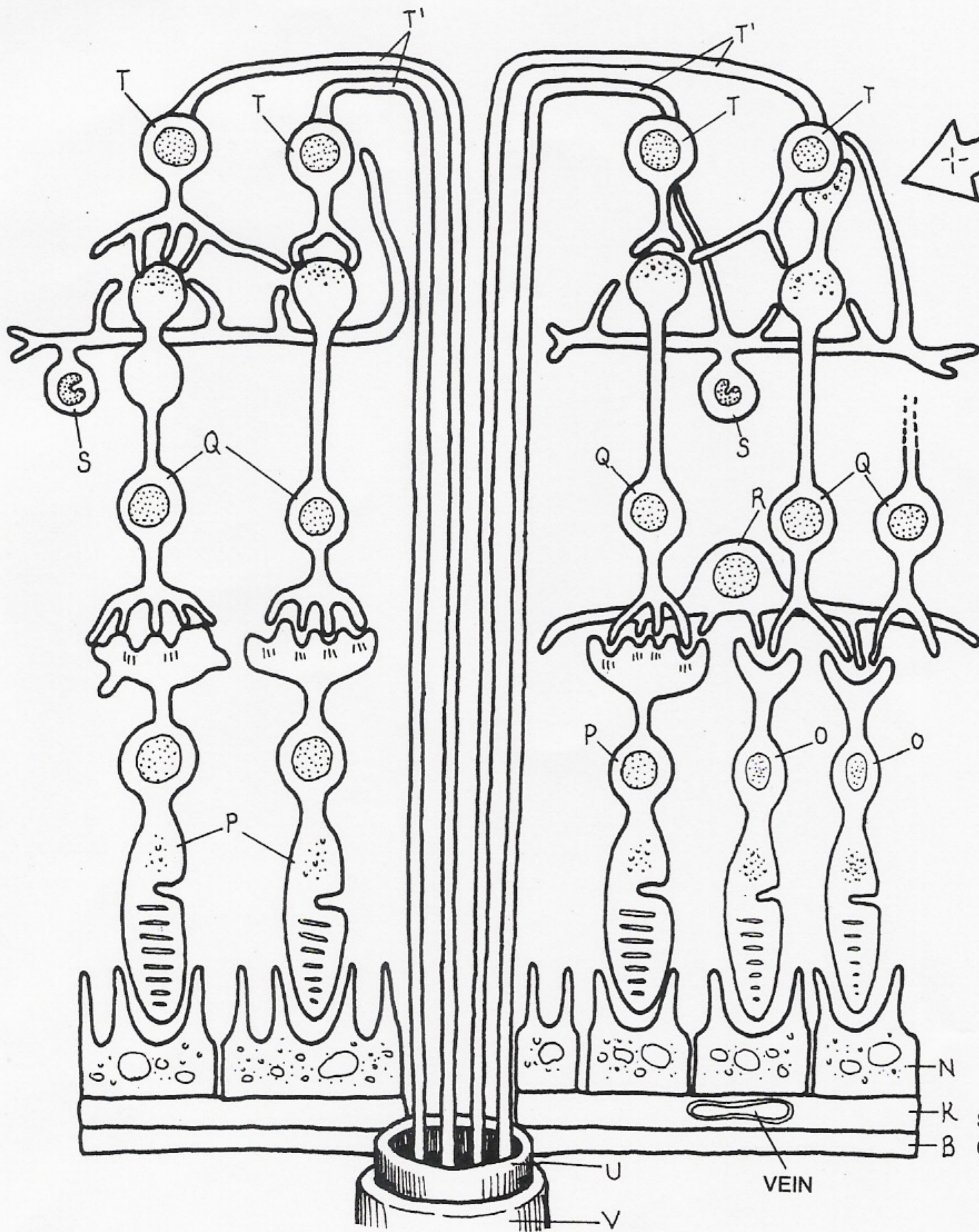
IRIS_E
PUPIL_{F† + C}

LENS_H

SUSPENSORY LIGAMENTS,
CHOROID_K
VITREOUS BODY,
RETINA_M



HORIZONTAL SECTION OF THE LEFT EYE



RETINA★
PIGMENT LAYER_N
ROD CELL_S
CONE CELL_Q
BIPOLAR CELL_P
HORIZONTAL CELL_R

GANGLION CELL_O/AXON_T
OPTIC NERVE_U
SHEATH OF OPTIC N._V

SCHEMATIC OF RETINAL CELLULAR ORGANIZATION

AUDITORY SYSTEM: THE EAR.

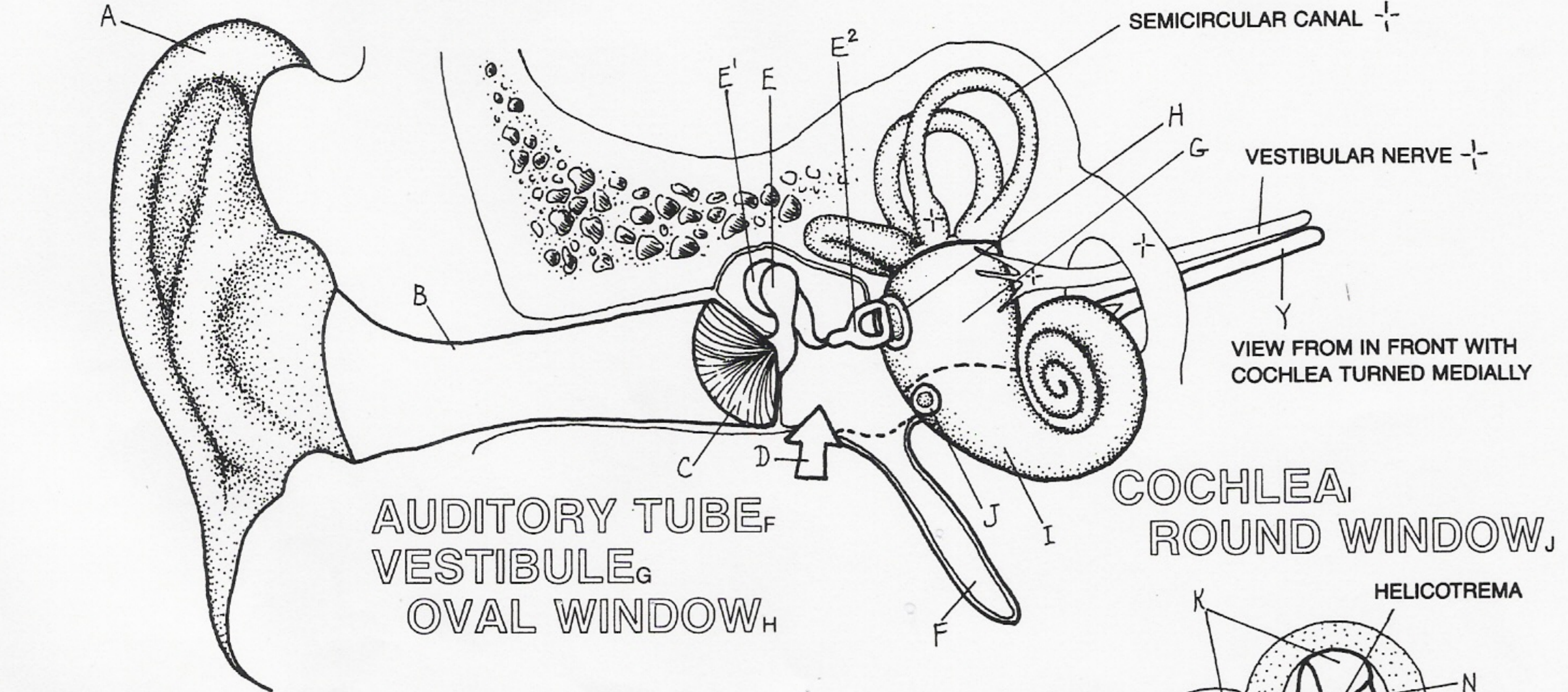
EXTERNAL EAR ★

MIDDLE EAR ★

MIDDLE EAR CAVITY,

MALLEUS_E/INCUS_E/STAPES_E

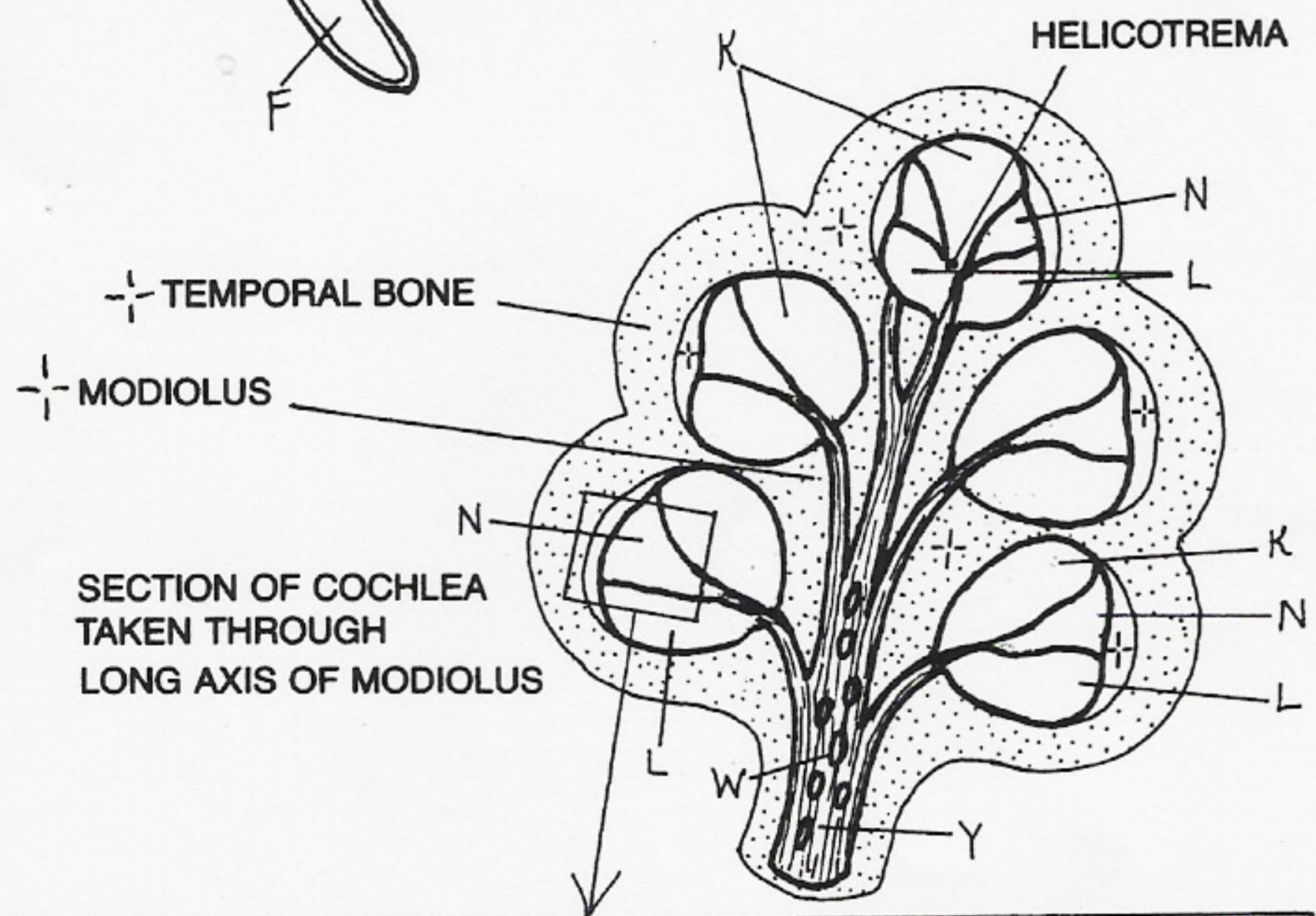
TYMPANIC MEMBRANE.



AUDITORY TUBE_F
VESTIBULE_G
OVAL WINDOW_H

COCHLEA,
ROUND WINDOW,

COCHLEA OF THE INNER
EAR ★



SECTION OF COCHLEA
TAKEN THROUGH
LONG AXIS OF MODIOLUS

BASILAR MEMBRANE.

TECTORIAL MEMBRANE_R

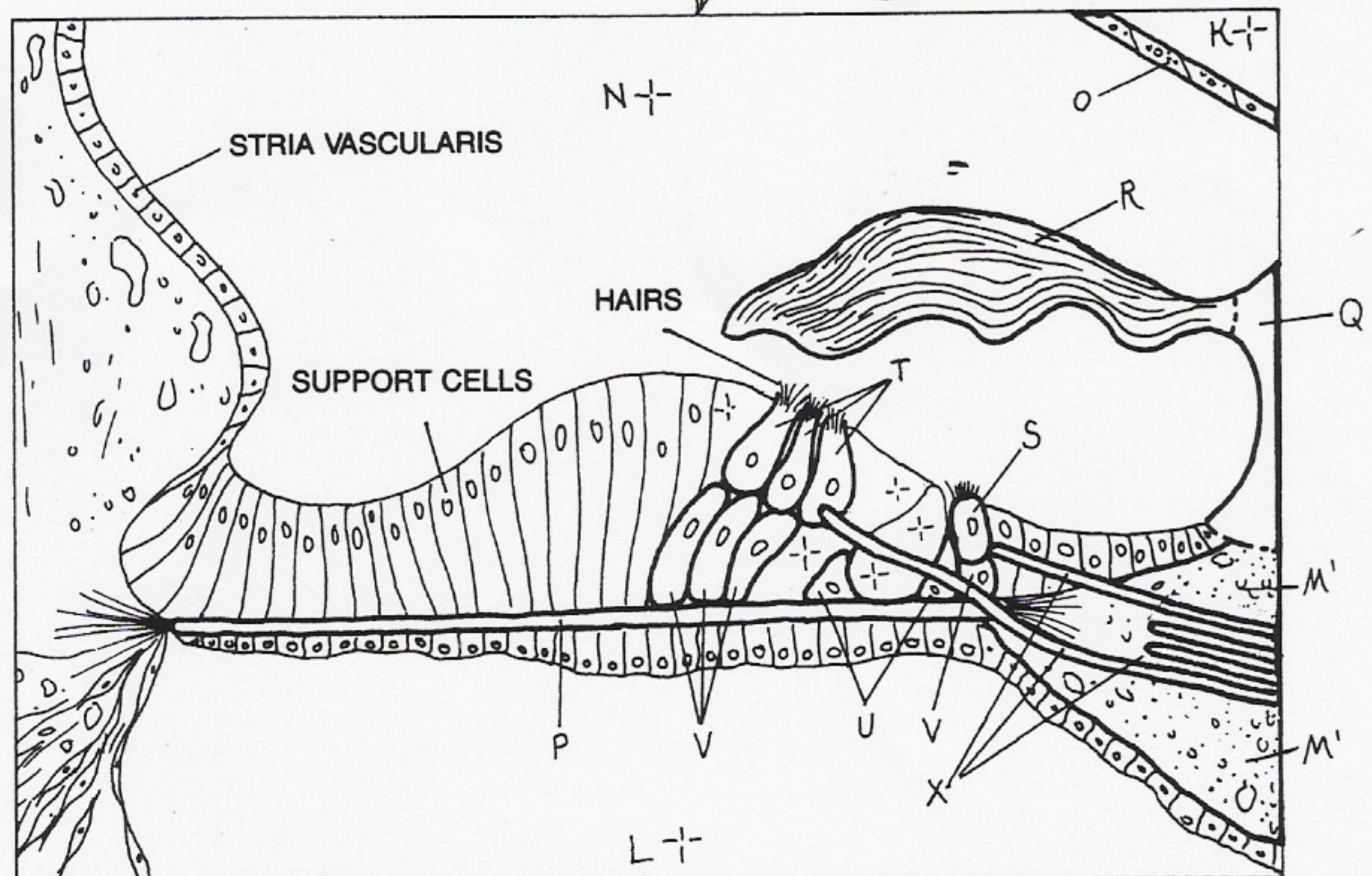
ORGAN OF CORTI ★

INNER HAIR CELL_S

OUTER HAIR CELL_T

PILLAR CELL_U

COCHLEAR NERVE
FIBERS_Y



CROSS SECTION THROUGH COCHLEAR DUCT